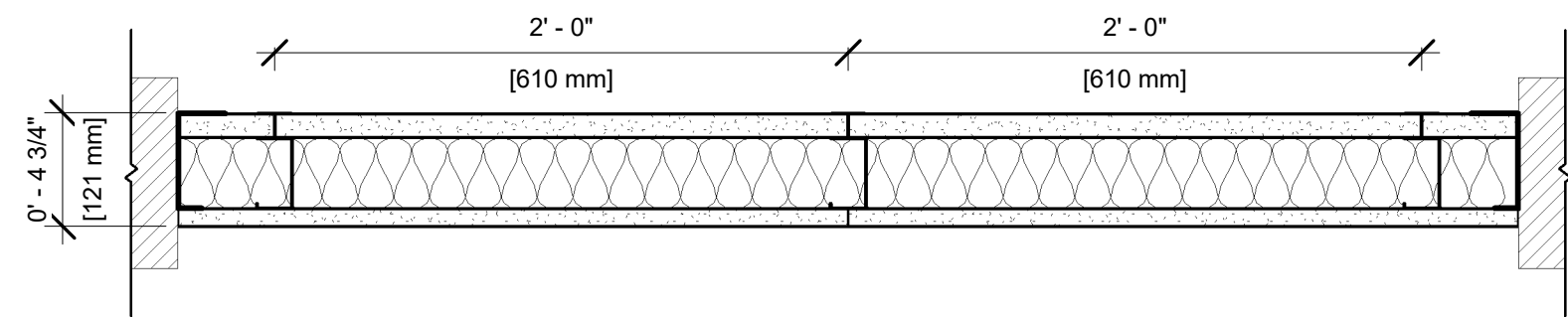


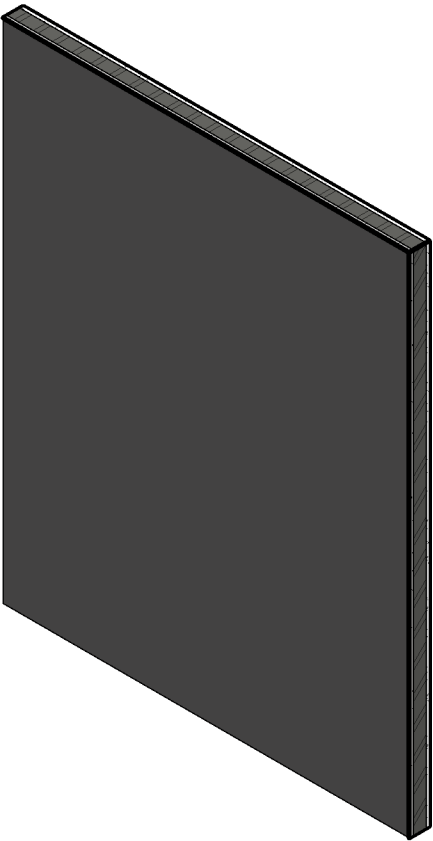
UL DESIGN NO. U415 C

FIRE RATING: 2 Hour  
STC: 51  
SOUND TEST: USG-040913  
SYSTEM THICKNESS: 4 3/4"



ASSEMBLY OPTIONS:

- GYPSUM BOARD:** ONE LAYER 1" THICK GYPSUM LINER PANEL (UL TYPE SLX™)
- STEEL STUDS:** 4" CH STUDS, 20 GA. MSG., SPACED 24" O.C.
- INSULATION:** 3" MINERAL WOOL INSULATION IN CAVITY
- GYPSUM BOARD:** ONE LAYER 3/4" THICK GYPSUM BOARD (UL TYPE ULTRACODE™)



NOTES:

STUD AND INSULATION SIZES ARE MINIMUM UNLESS OTHERWISE STATED IN DESIGN.

FOR THE MOST UP-TO-DATE INFORMATION OR ASSEMBLY OPTIONS, REFER TO THE UL FIRE RESISTANCE DIRECTORY.

REFER TO THE UL FIRE RESISTANCE DIRECTORY FOR INFORMATION REGARDING PRODUCT ORIENTATION AND FASTENING REQUIREMENTS.